

*Town of Portsmouth
Medical Emergency Distribution System
(MEDS)
Point of Dispensing (POD) Plan*

Purpose of the Plan

- *Prepare for Mass Antibiotic or Vaccine Dispensing*
 - Medical Countermeasures
 - Effective Public Information
- *Potential Triggers*
 - CDC Alert
 - RI DOH Determination
 - Terrorist Claim of Responsibility

Assumptions

- Risk of Threat has exceeded capacity of private health care
- Local Emergency Ops Center (EOC) is Operational
- Mobilization of All Available Resources
- State EOC Activated
- State Dept of Health Epidemiologist acts as prescriber
- Pre-staged Go-Kit Ready

RI DOH Will Provide

- All needed Medications and Medical Supplies
- Appropriate Pre-event Training
- Incident-specific Forms
- Administrative Instructions
- Public Information Campaign Instructions


The Portsmouth MEDS POD Plan

Certificate of Review

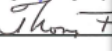
We, the undersigned, have by the affixing of our signature, reviewed the Town of Portsmouth Medical Emergency Distribution System (MEDS) and agree that the information contained therein is accurate and that we, as representatives of the undersigned, agree to the provisions as stipulated in the plan as required, no less than the minimum required.

I understand and acknowledge

Richard A. Rainer Jr. 
Name
Town Administrator

Richard Talipsky 
Name
MEDS Point of Contact


John King 
Name
Emergency Management Agency

Thomas Lee 
Name
Police Chief

Michael Cranson 
Name
Fire Chief

Michael O'Brien 
Name
Emergency Medical Services (EMS) Director

Ana Riley 
Name
School Superintendent

David Kehew 
Name
Director of Public Works

Town of Portsmouth
Medical Emergency Distribution System
For Official Use Only (FOUO)

Town of Portsmouth Rhode Island



Medical Emergency Distribution System (MEDS) - Point of Dispensing (POD) Plan

Revised 1-31-2016
Approved by RI DOH May 2016
Minor Changes May 2016
Revised October 30, 2018

Interim Update Dec 10, 2018

Personnel Update October 1, 2019
Personnel Update 3-4-2020

Priorities and Standards

- Primary POD
 - Portsmouth High School
- Alternate POD (If HS Not Available)
 - Portsmouth Middle School
- Closed PODs
 - None officially designated
 - Considering Prudence Is and Atria
- No need for public identification
- Unaccompanied minors permitted to proceed
- For oral medications, household encouraged to designate POD pickup for family
 - Number of bottles of medication based on completed forms
- Do not expect any “Drive-Through” option
- Plan does not address a “COVID” contagion type situation

Concept of Operations

- Receive Initial Notification from RI DOH
- POD Set-up 6-12 hours
- Plan to administer to entire population within 48 hrs
 - Total operational period – 72 hours
- Convene Leadership Planning Meeting
- Mobilization Plan Agenda
 - Nature of threat and urgency
 - POD site availability
 - POD Organization and Staffing
 - Decision to activate EOC or use local POD Command
 - Review Communications Plans
 - Discuss affected infrastructure
 - Public Information Plan

Ramping Up for an Anticipated MEDS POD Mobilization

- Go-Kit Inventory – Completed 4-16-20
 - Order needed items
- Maximize Basic MEDS Training*
 - RI DOH Virtual Training (on-going)
- FEMA Incident Command System On-line Training (Not MEDS specific)
 - FEMA ICS-100.c – Basic ICS (desired)
 - <https://training.fema.gov/is/courseoverview.aspx?code=IS-100.c>
 - FEMA ICS-200.c - ICS for Initial Response (desired)
 - <https://training.fema.gov/is/courseoverview.aspx?code=IS-200.c>
 - FEMA IS-700.b: An Introduction to the National Incident Management System (optional)
 - <https://training.fema.gov/is/courseoverview.aspx?code=IS-700.b>
 - (Note: to obtain official credit, establish a FEMA training account at the site <https://cdp.dhs.gov/femasid>)
- Review MEDS POD Assignments
 - Dept s Review Status of MEDS POD Staff Assignments
 - Review status of current volunteers to fill first shift
 - Status of volunteers to fill 2nd and 3rd shift operations
 - Train on MEDS POD Job Action Sheets
- Exercise Capabilities
 - Small Group Training (Social Distancing Restrictions)
 - Entry Control/Triage
 - Forms and Screening
 - Medical Eval
 - Point of Dispensing
 - Full Setup Exercise

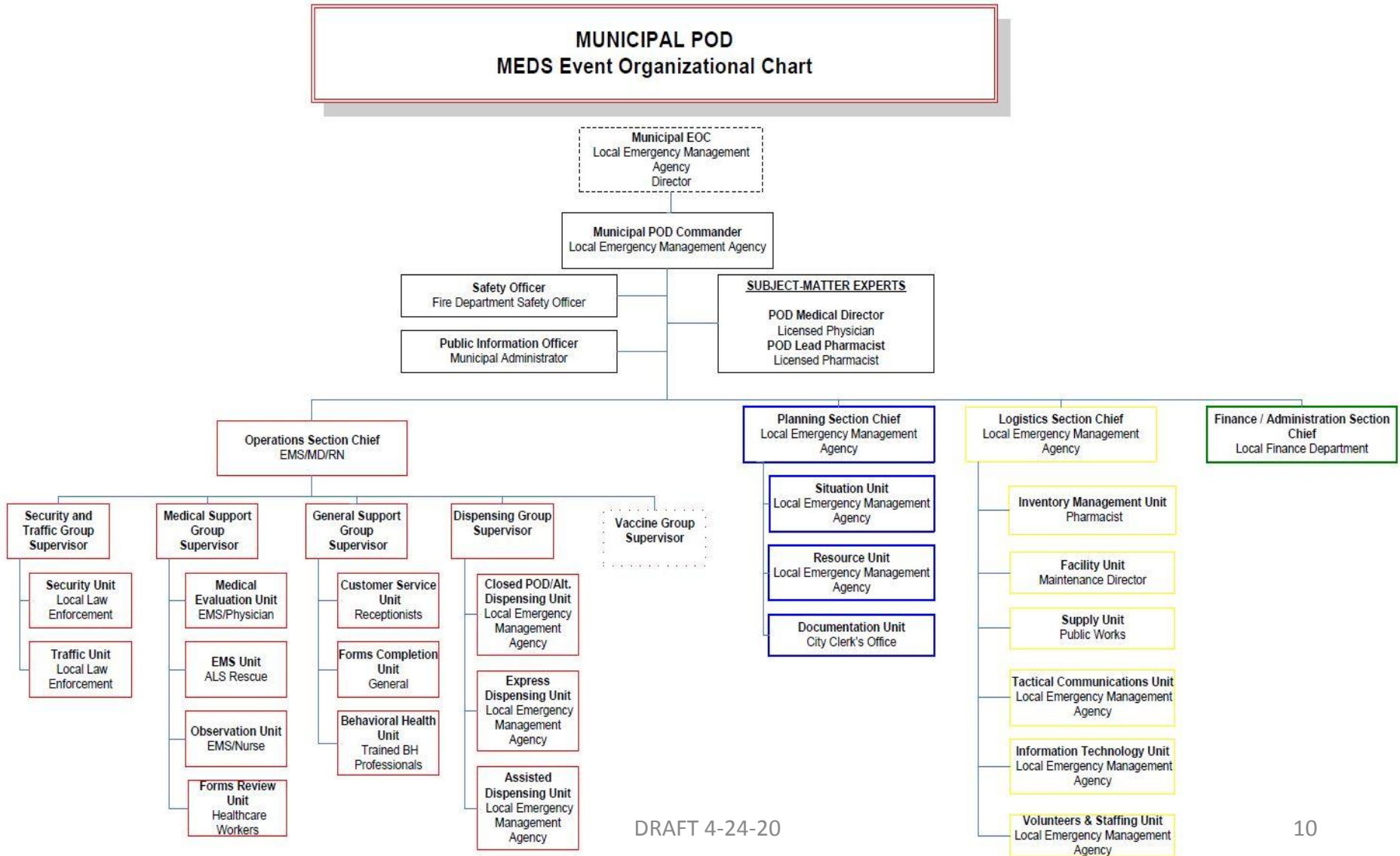
**Note: No training is required to be a MEDS POD volunteer. Anyone who wants to volunteer can be placed in a POD support position based on their pre-POD or POD “Just-in-Time” training done at POD arrival. Being trained in Basic MEDS and the ICS makes volunteer useful at more-skilled tasks.*

POD Mobilization

(see Pre-Mobilization Plan at end of this presentation)

- Notify Key POD Personnel
- Establish POD Command Structure
- Determine minimum staffing/shifts
- Contact list of staff and volunteers
- Coordinate Police for Security
- Plan for Managing At-Risk Individuals
- Plan for Transportation of Symptomatic Individuals
- Monitoring for Adverse Events
- Arrange for Delivery of Med Countermeasures
- Set up POD Site
 - Initiate Badging and Credentialing
 - Conduct Just-In-Time-Training
 - Provide Countermeasures to Staff, First Responders and their families
- Activate POD for Public

POD Organizational Chart



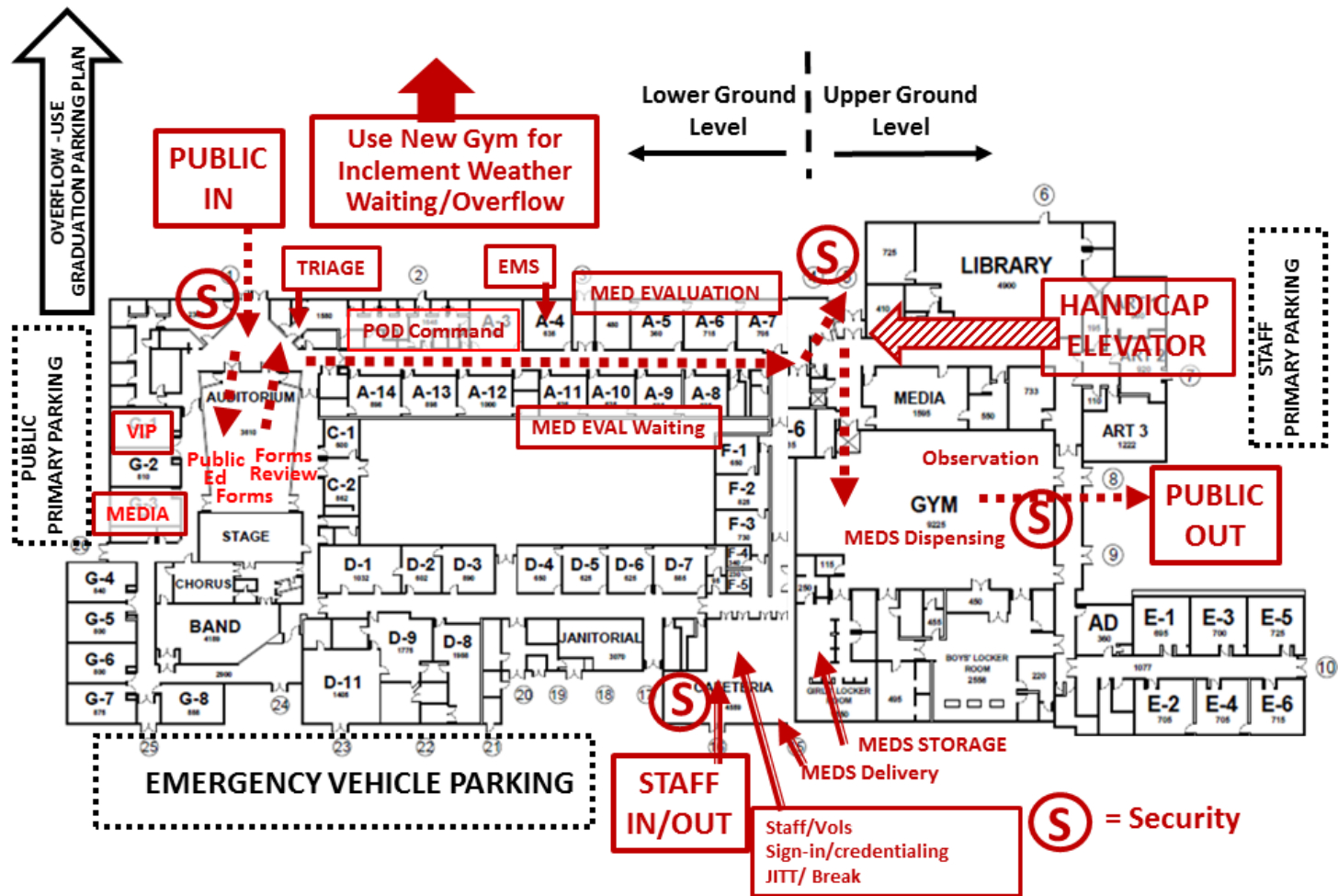
POD Operations Overview

- Plan for Operational Period of 72 Hours
- Triage (identify special needs from general population)
 - Evaluation and Transportation of Symptomatic Individuals
- Control Entry and Flow
 - Signage with Universal Terms
- Orderly Admin Processing
 - Paperless process considered (if directed)
- Rapid dispensing
 - Efficient Throughput
 - Head of Household (except for injections)
- Management of at-risk individuals
 - With functional/access needs
- Inventory Management
- Monitoring for Adverse Events

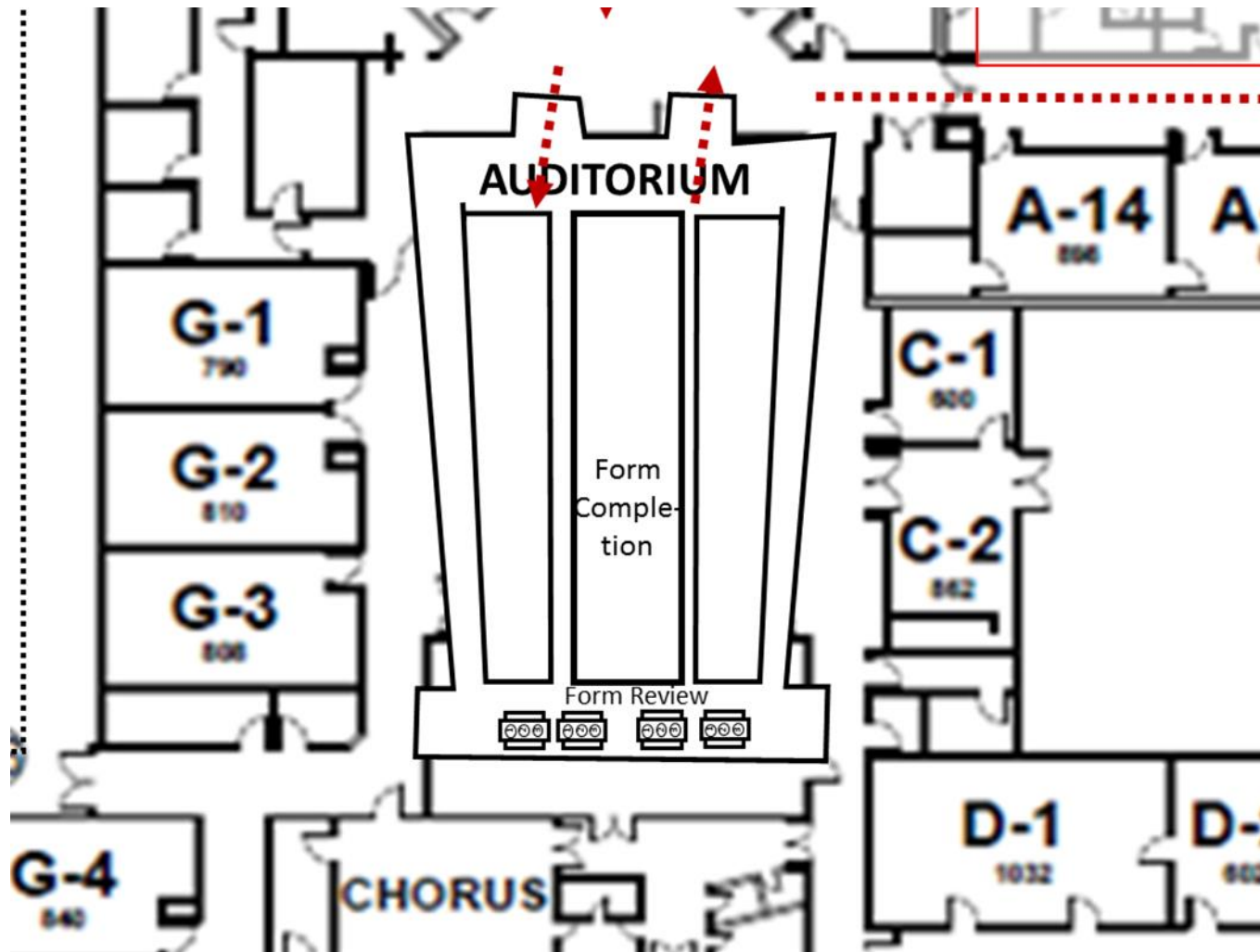
POD “Go-Kit”

- Container Prepositioned at High School
 - Contains all the materials to set up POD
 - Signs and sign holders
 - Medical material (PPE, stethoscopes, anti-bacterials, etc.)
 - Admin (clipboards, pens, etc.)
 - Tools (caution tape, duct tape, extension cords, etc.)
 - Two-way Radios
 - Perishable/Shelf Life Items
 - Check stock periodically
 - Be Ready for Just-in-Time Procurement of some items
 - Batteries

Portsmouth High School POD Plan



Entrance Processing



Dispensing Plan (PHS Old Gym)

