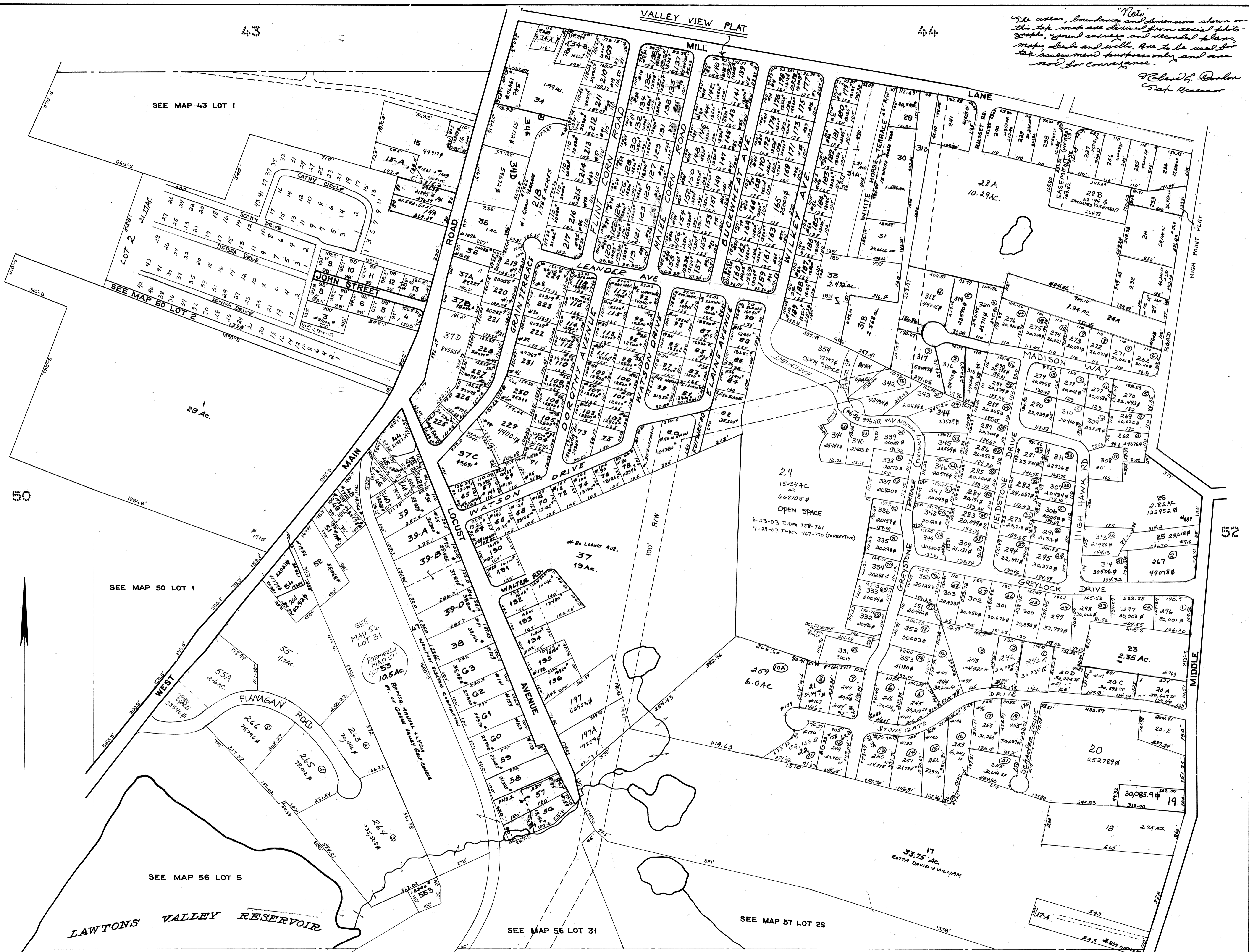


Note:
 The color, boundaries and dimensions shown on this map are derived from aerial photographs, ground surveys and records. Plans, maps, deeds and wills are to be used for tax assessment purposes only and are not for conveyance.
 Charles E. Condon
 City Assessor



LEGEND
 PARCEL NUMBERS 1
 ADJACENT MAPS 2
 MATCH LINE

PROPERTY MAP
TOWN OF PORTSMOUTH
 NEWPORT COUNTY, RHODE ISLAND
 PREPARED BY
 JAMES W. SEWALL COMPANY OLD TOWN, MAINE
 SCALE 1 INCH = 200 ± FEET