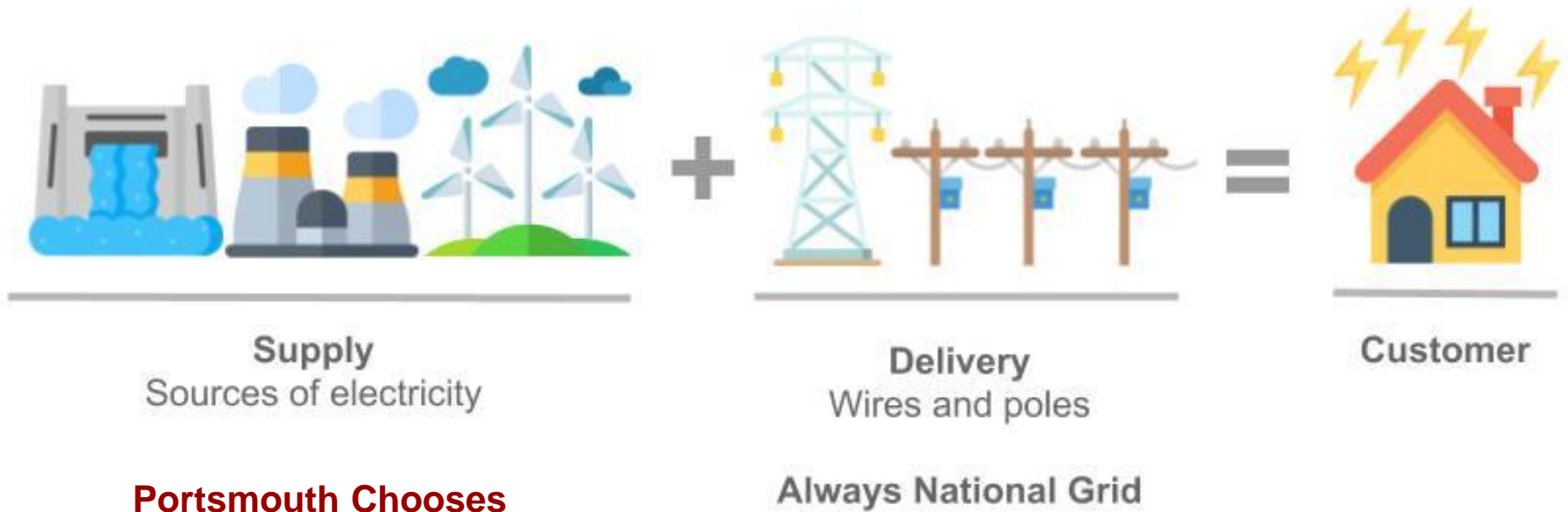


Portsmouth Community Choice Aggregation



Implementation Steps

1. Pass Article at Council
2. Develop draft aggregation plan and solicit public input
3. Secure local approval for plan
4. Submit to Public Utilities Commission
5. PUC issues order approving aggregation plan
6. Issue RFP for competitive supplier and award bid to winning supplier
7. Public education and opt out campaign for eligible residents and businesses
8. Eligible accounts that have not opted-out are automatically enrolled on next meter read, electricity flows at new rate.

Components of Plan

- Eligible participants
- Oversight and management of program
- Electricity products to offer
- Bidding out the electricity supply
- Education and outreach (see Attachment 2)
- How to opt out and not participate

Electricity Products in Draft Plan

Standard Product (for automatic enrollment)

- Goal: provide some savings while also including extra renewable energy. Likely 10% extra renewable energy.

Optional Products

- **Basic** - no extra renewable energy, offers the most potential savings
- **50% renewable energy**
- **100% renewable energy**