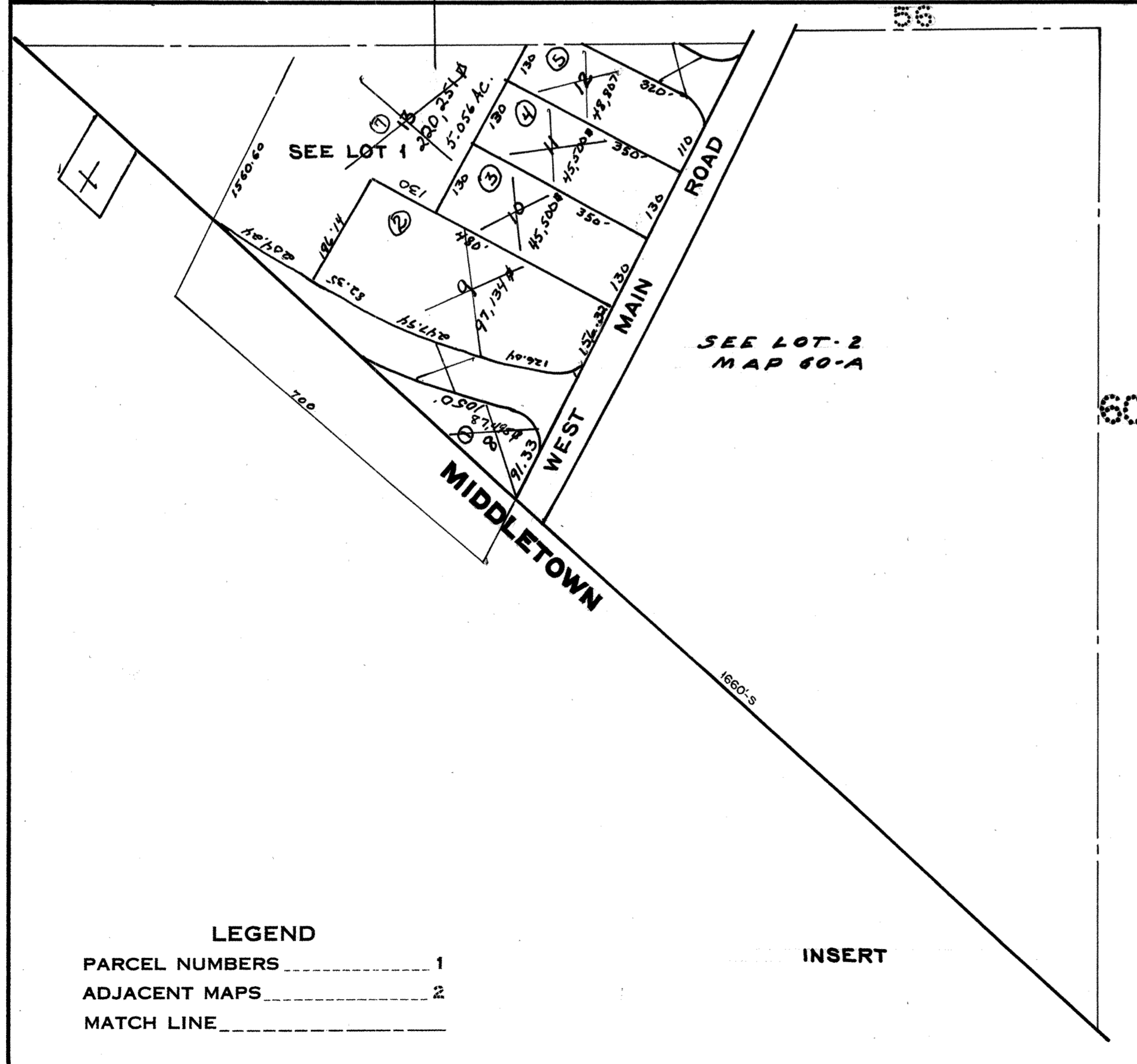


NOTE:
 9-20-00 PLAT INDEX # 587+588
 COMBINES Lots 8,9,10,11,12,13
 WITH Lot 1A



LEGEND
 PARCEL NUMBERS 1
 ADJACENT MAPS 2
 MATCH LINE 3

INSERT

○ Subdivision/Lot #
 # SQUARE FT.
 # HOUSE NO
 REVISED;

"Note"
 The areas, boundaries and dimensions
 shown on this tax map are derived
 from aerial photographs, ground surveys
 and recorded plans, maps, deeds and
 wills, and are to be used for tax purposes
 only, and are not for conveyance.
 R.E.D.
 Tax Assessor

PROPERTY MAP
TOWN OF PORTSMOUTH
 NEWPORT COUNTY, RHODE ISLAND
 PREPARED BY
 JAMES W. SEWALL COMPANY OLD TOWN, MAINE
 SCALE 1 INCH = 200 ± FEET