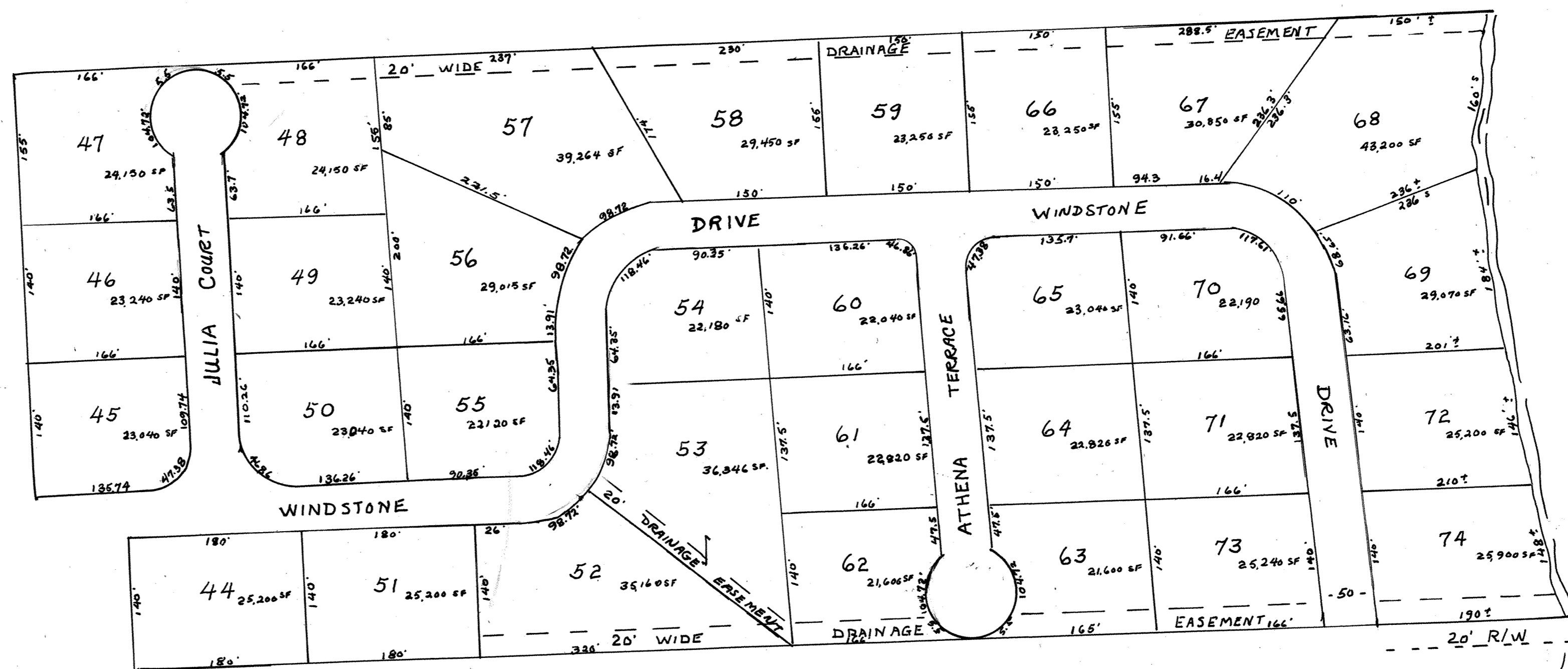




SARONNET



SEE MAP 49

SEE MATCH LINE - MAP 49

NOTE
 THE AREA BOUNDARIES AND DIMENSIONS
 SHOWN ON THIS MAP ARE DERIVED
 FROM AERIAL PHOTOGRAPHS, GROUND
 SURVEYS AND RECORDED PLANS. MAPS,
 DEEDS AND WILLS. ARE TO BE USED
 FOR TAX ASSESSMENT PURPOSES ONLY

Glenn D. Dorton
 Tax Assessor

SECTION A - "WINDSTONE ESTATES"

PROPERTY MAP
 TOWN OF PORTSMOUTH
 NEWPORT COUNTY RHODE ISLAND
 SCALE 1" = 100'
 APPROVED PLAT IN 1979

RIVER