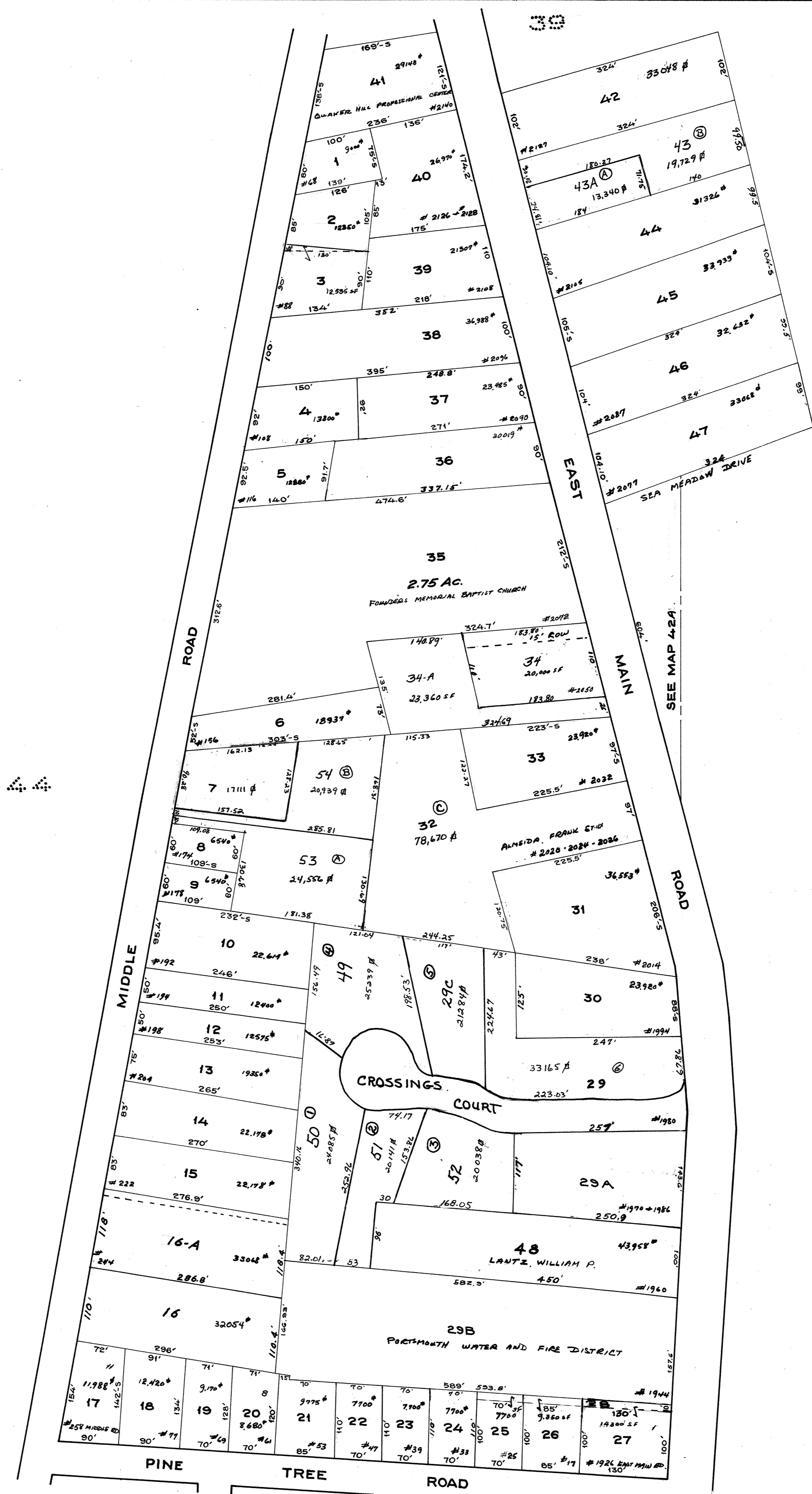




LEGEND
 PARCEL NUMBERS 1
 ADJACENT MAPS 2
 MATCH LINE 3



42

Note
 The areas, boundaries and dimensions shown on this tax map are derived from aerial photographs, ground surveys and recorded plans, maps, deeds and wills. Care to be used for tax assessment purposes only and

Not for Conveyance
 Robert E. Gordon
 Tax Assessor

PROPERTY MAP
TOWN OF PORTSMOUTH
 NEWPORT COUNTY, RHODE ISLAND
 PREPARED BY
 JAMES W. SEWALL COMPANY OLD TOWN, MAINE
 SCALE 1 INCH = 100 ± FEET

SQUARE FT.
 # HOUSE NO.
 REVISED: