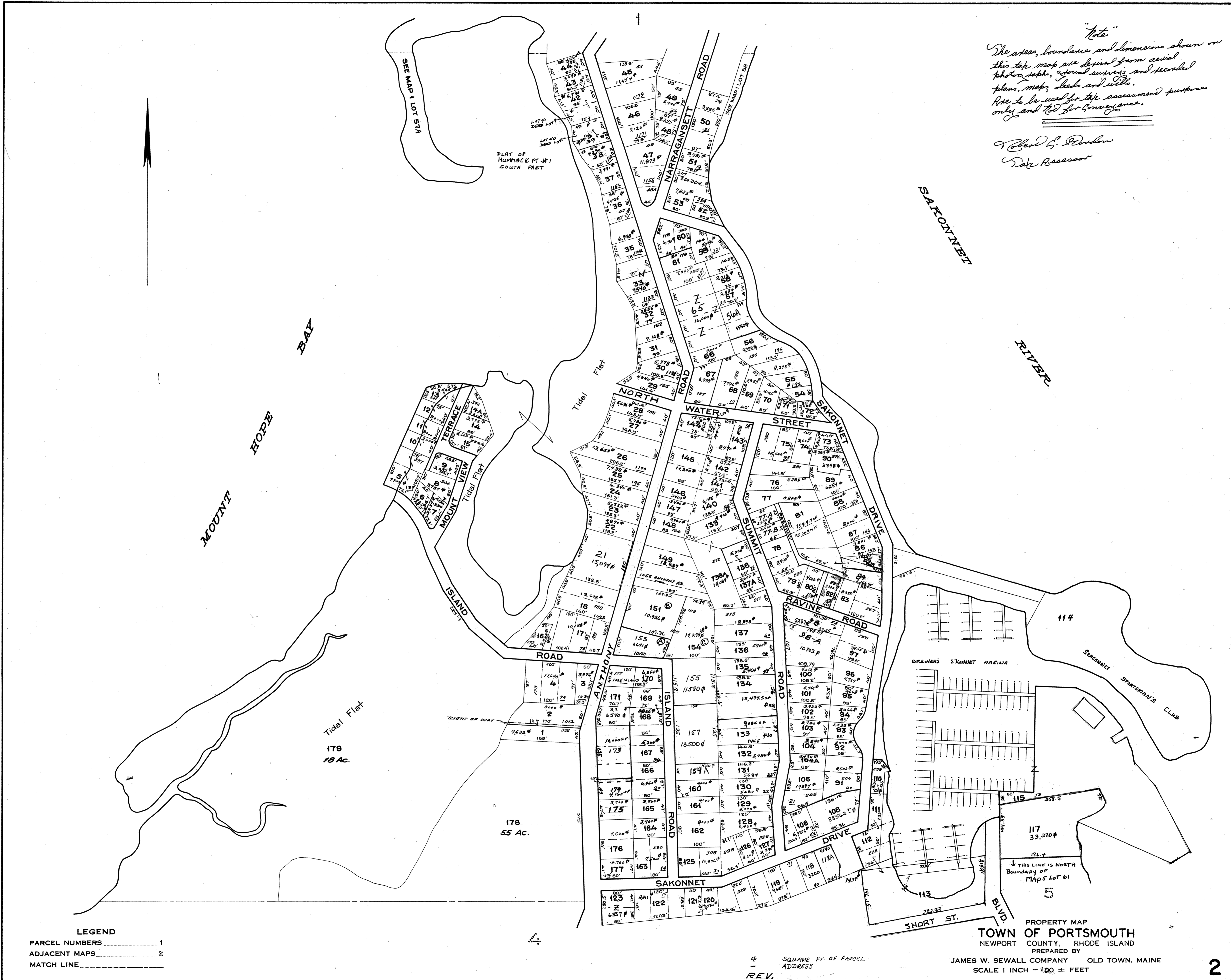


Note
 The areas, boundaries and dimensions shown on this plat map are derived from aerial photographs, ground surveys and recorded plans, maps, deeds and wills.
 Not to be used for title assessment purposes only and not for convenience.

Charles C. Gordon
 Tax Assessor



LEGEND
 PARCEL NUMBERS 1
 ADJACENT MAPS 2
 MATCH LINE 3

PROPERTY MAP
TOWN OF PORTSMOUTH
 NEWPORT COUNTY, RHODE ISLAND
 PREPARED BY
 JAMES W. SEWALL COMPANY OLD TOWN, MAINE
 SCALE 1 INCH = 100 ± FEET