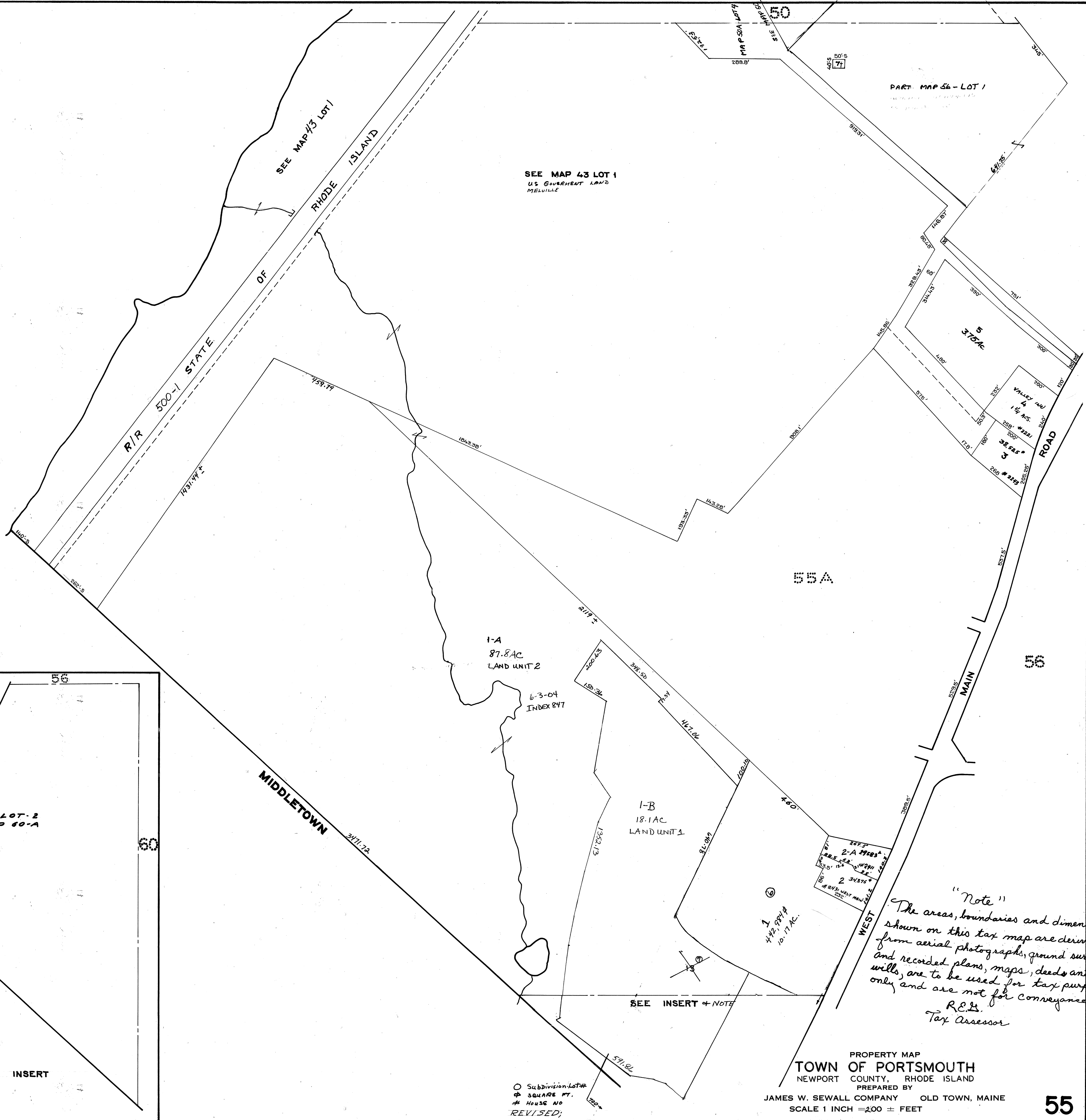
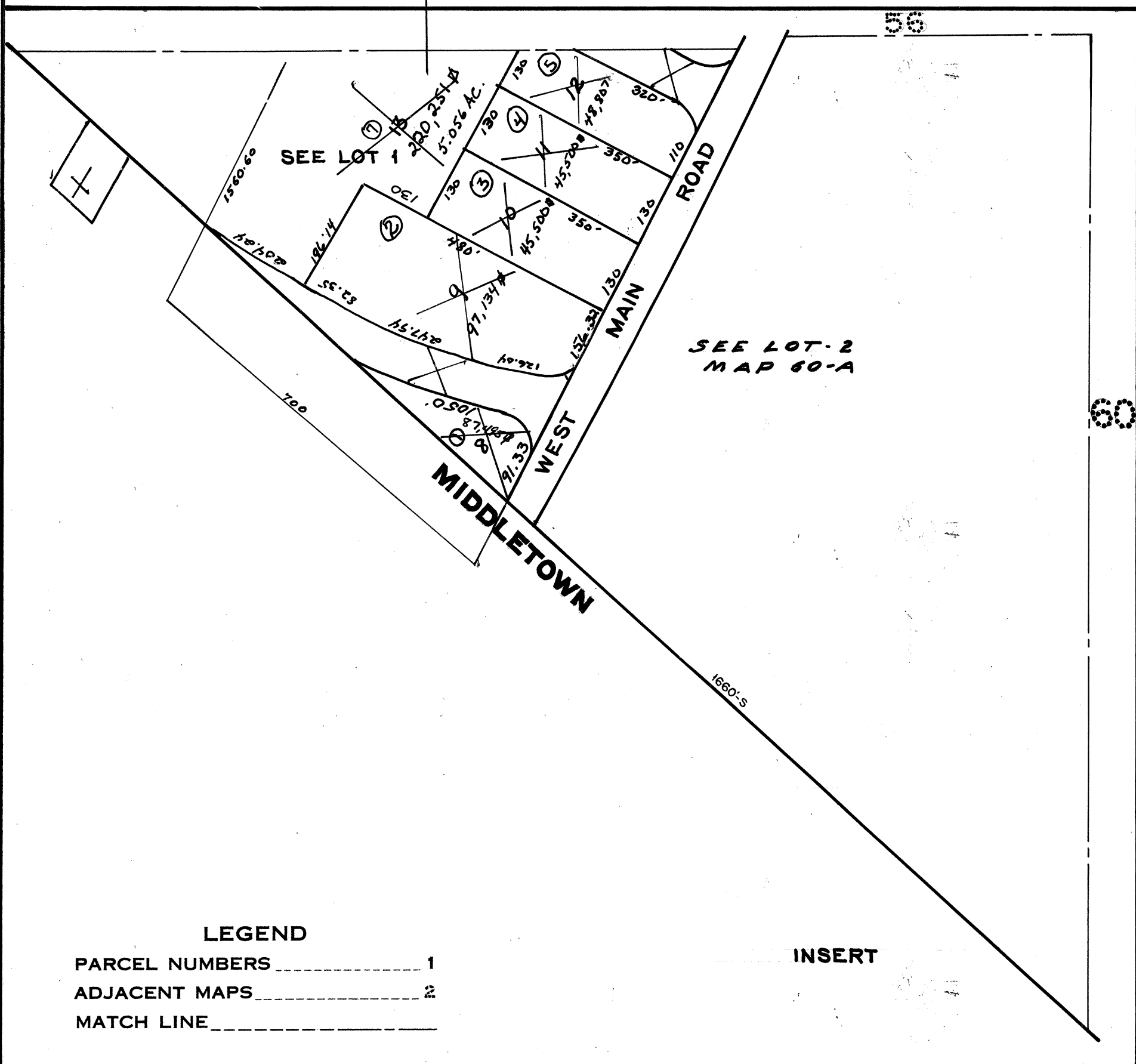




NOTE:
9-20-00 PLAT INDEX # 581+588
COMBINES LOTS 9, 10, 11, 12, 13
WITH LOT 1A ON MAP 55



"Note"
 The areas, boundaries and dimensions shown on this tax map are derived from aerial photographs, ground surveys and recorded plans, maps, deeds and wills, are to be used for tax purposes only and are not for conveyance.
 R.E.G.
 Tax Assessor

PROPERTY MAP
TOWN OF PORTSMOUTH
 NEWPORT COUNTY, RHODE ISLAND
 PREPARED BY
 JAMES W. SEWALL COMPANY OLD TOWN, MAINE
 SCALE 1 INCH = 200 ± FEET