



39  
SEE MAP 39, LOT 67

40

SEE MAP 40, LOT 32

LOT 33 PLAT-40

EAST MAIN ROAD

SEA MEADOW DRIVE

CAIGER LANE

SEA MEADOW DRIVE

SEA MEADOW DRIVE

SEA MEADOW DRIVE

SEA MEADOW DRIVE

SEA MEADOW DRIVE

LAMBIE CIRCLE

LAMBIE CIRCLE

SAKONNET RIVER

HOLMAN STREET

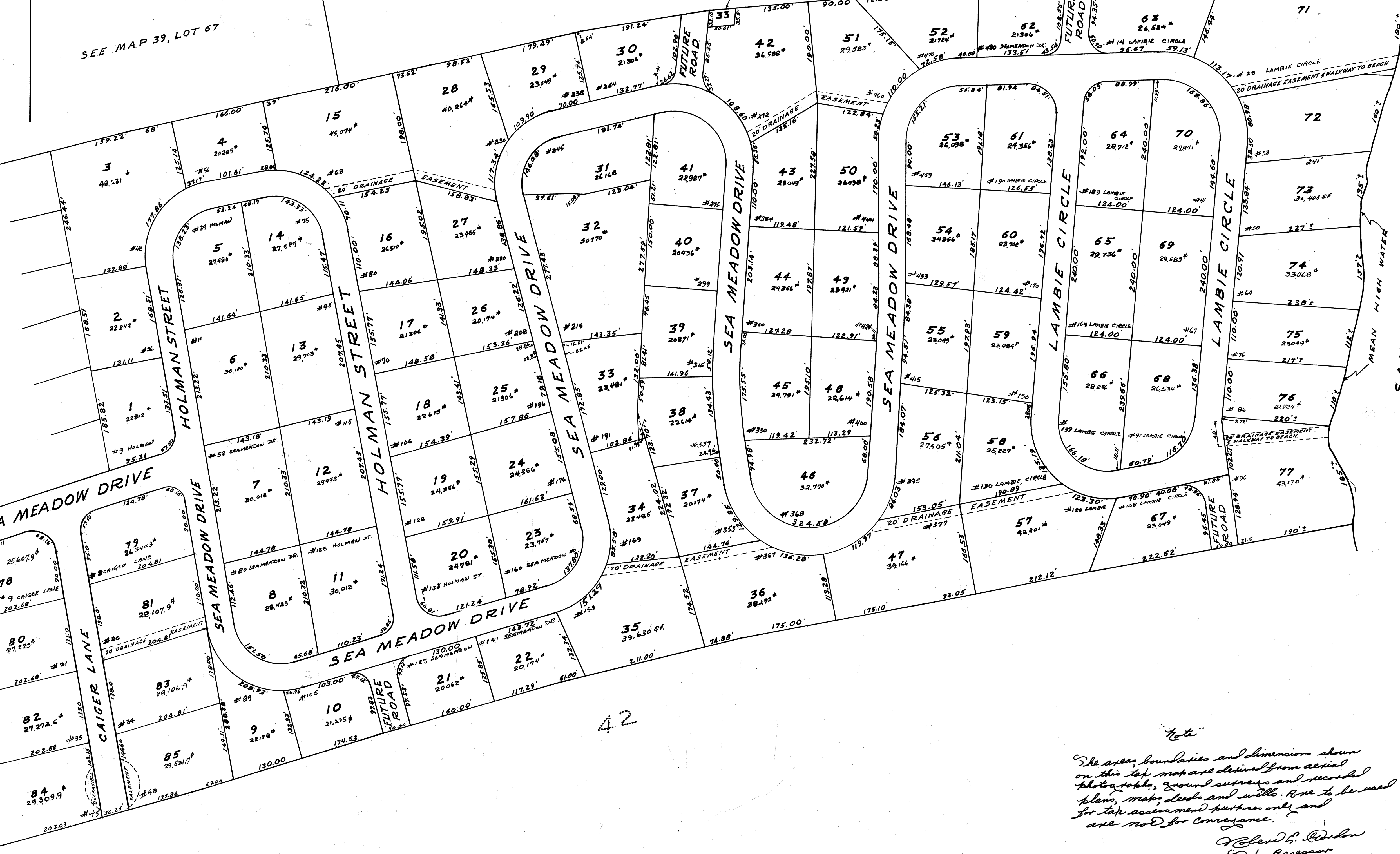
HOLMAN STREET

FUTURE ROAD

FUTURE ROAD

FUTURE ROAD

FUTURE ROAD



*Note*  
The area, boundaries and dimensions shown on this map are derived from aerial photographs, ground surveys and recorded plans, maps, deeds and wills. One to be used for the assessment purposes only and are not for conveyance.  
Robert B. Dunbar  
Sak. Registrar

PROPERTY MAP  
**TOWN OF PORTSMOUTH**  
NEWPORT COUNTY, RHODE ISLAND

PREPARED BY  
HAROLD E. ST. JOHN NEWPORT, RHODE ISLAND

# SQUARE FT.  
# HOUSE NO.  
REV: 11/11/11

42-A