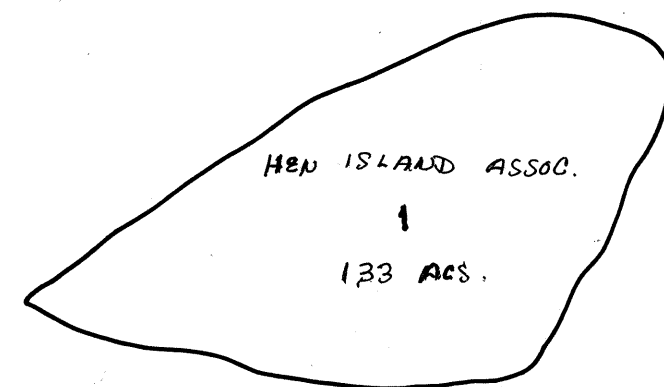
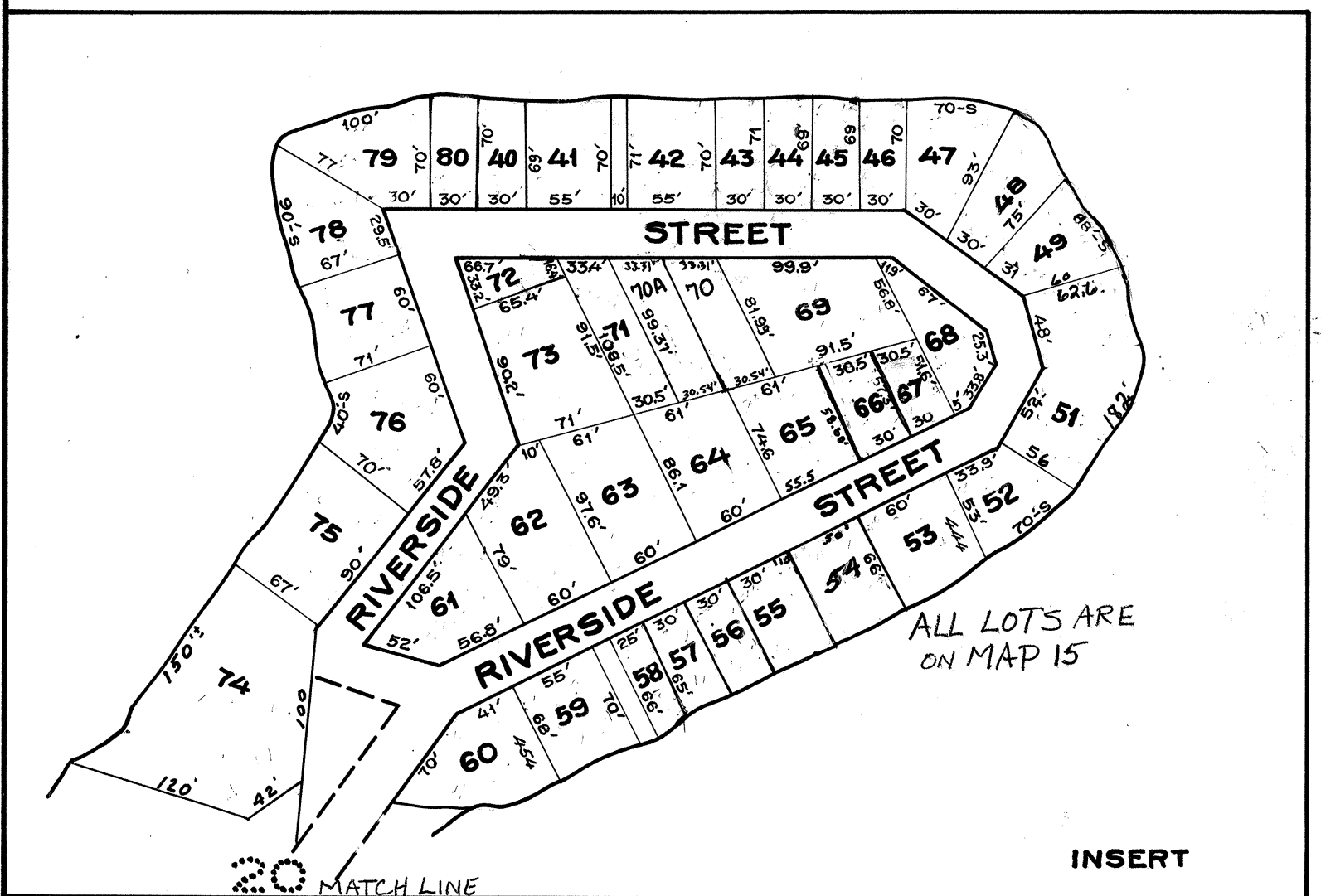


SACONNET RIVER



Note
The area's boundaries and dimensions shown on this tax map are derived from aerial photographs, ground surveys and recorded plans, maps, deeds and wills. It is to be used for tax assessment purposes only and are not for conveyance.
Charles B. Dondan
Tax Assessor

LEGEND
PARCEL NUMBERS 1
ADJACENT MAPS 2
MATCH LINE

21
SQUARE FT.
HOUSE NO.
REVISED

PROPERTY MAP
TOWN OF PORTSMOUTH
NEWPORT COUNTY, RHODE ISLAND
PREPARED BY
JAMES W. SEWALL COMPANY OLD TOWN, MAINE
SCALE 1 INCH = 1.00 ± FEET