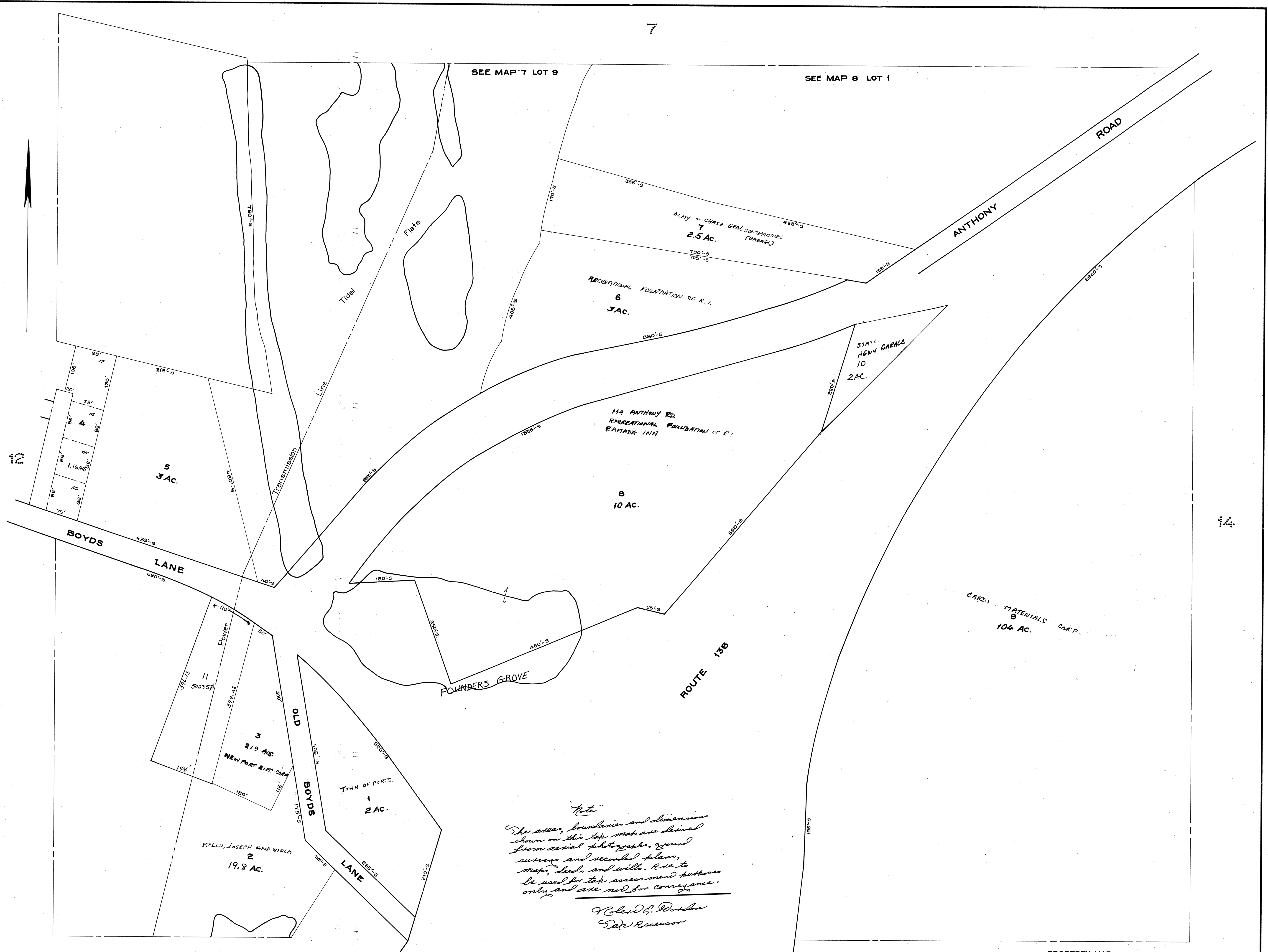


SEE MAP 7 LOT 9

SEE MAP 8 LOT 1



Note
 The area, boundaries and dimensions shown on this top map are derived from aerial photographs, ground surveys and recorded plans, maps, deeds and wills. Use to be used for tax assessment purposes only and are not for conveyance.

Robert L. Dondan
 Tax Assessor

LEGEND
 PARCEL NUMBERS 1
 ADJACENT MAPS 2
 MATCH LINE

PROPERTY MAP
TOWN OF PORTSMOUTH
 NEWPORT COUNTY, RHODE ISLAND
 PREPARED BY
 JAMES W. SEWALL COMPANY OLD TOWN, MAINE
 SCALE 1 INCH = 100 ± FEET